



Department of Biodiversity,
Conservation and Attractions



Biodiversity and
Conservation Science



**TARLKA
MATUWA
PIARKU**

(ABORIGINAL CORPORATION) RNTBC

*We're working for
Western Australia.*



Counting cats in an arid landscape

Cheryl Lohr, Dave Algar, Kristen Nilsson, Ashleigh Johnson, Neil Hamilton, Mike Onus

Landscape scale

Legend

📍 120_Reconyx_Nov2018_GDA94MGA51

🔴 2018 Track Activity Index (TAI)

🔵 2019 Track Activity Index (TAI)

— 4WD tracks

Habitat categories

🟠 Hardpan

🟡 Sandplain

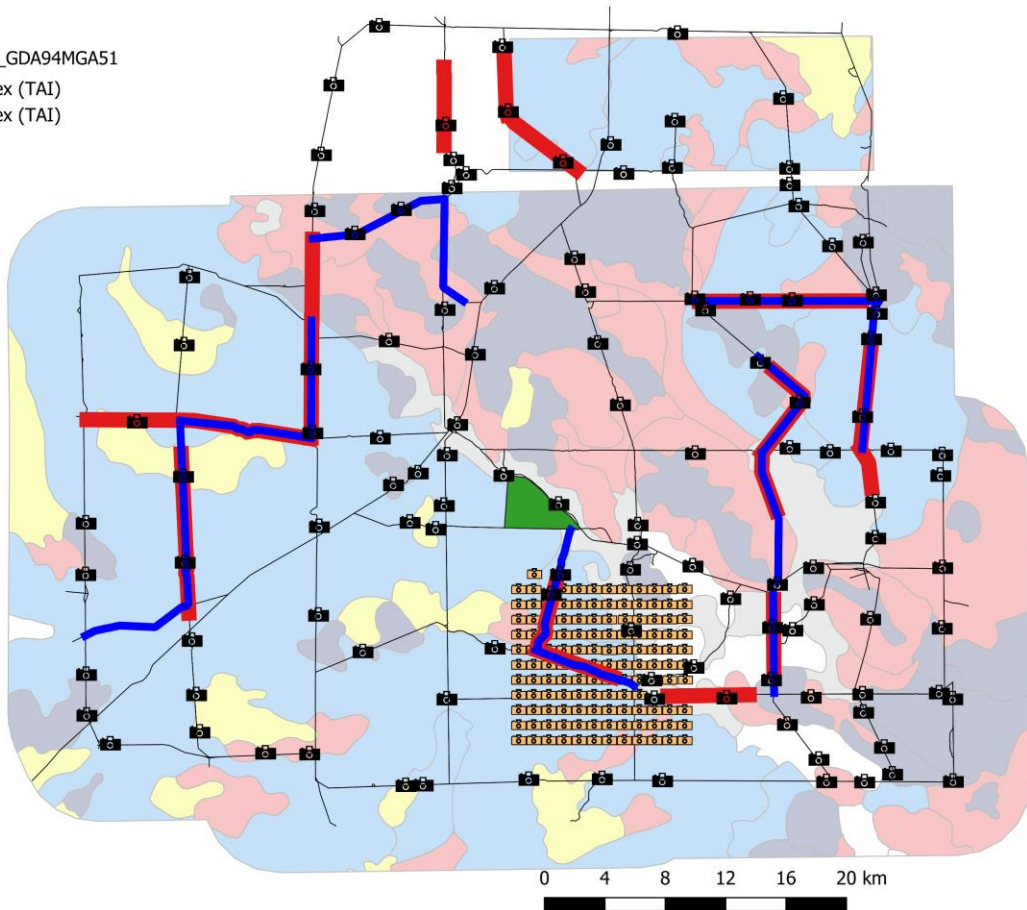
🟤 Salt lake

🟢 Calcrete

🟣 Stony

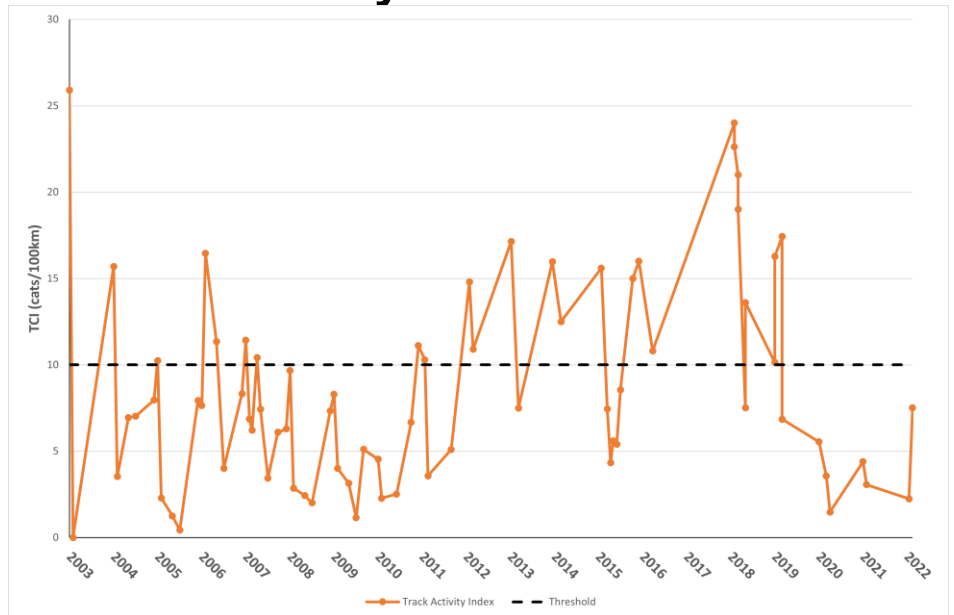
🟠 Breakaway

🟢 Predator-free enclosure

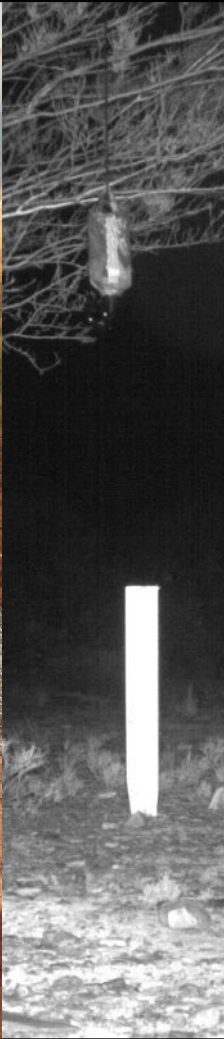


0 4 8 12 16 20 km

Track Activity Index



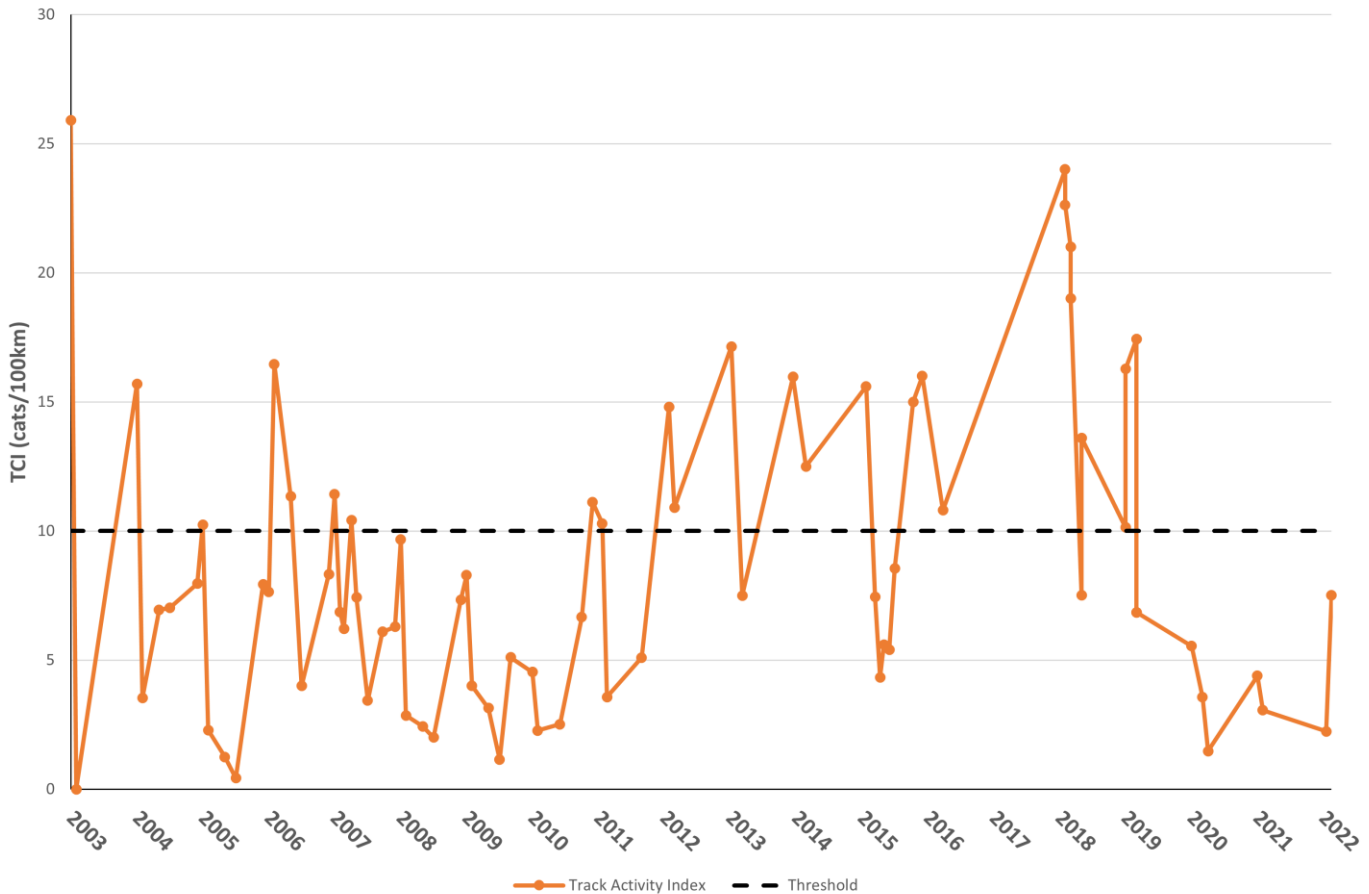
Camera-traps



Eradicat



Is it working?



Aerial baiting v ground baiting

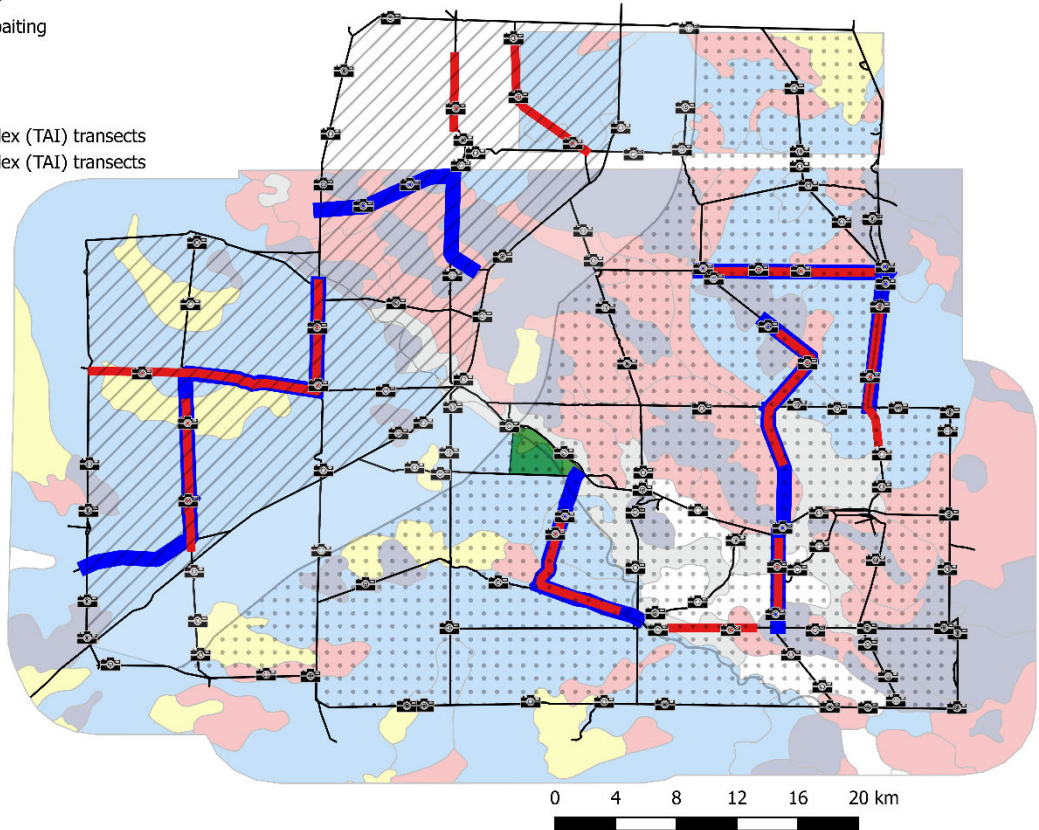
Legend

1080 Baiting treatments

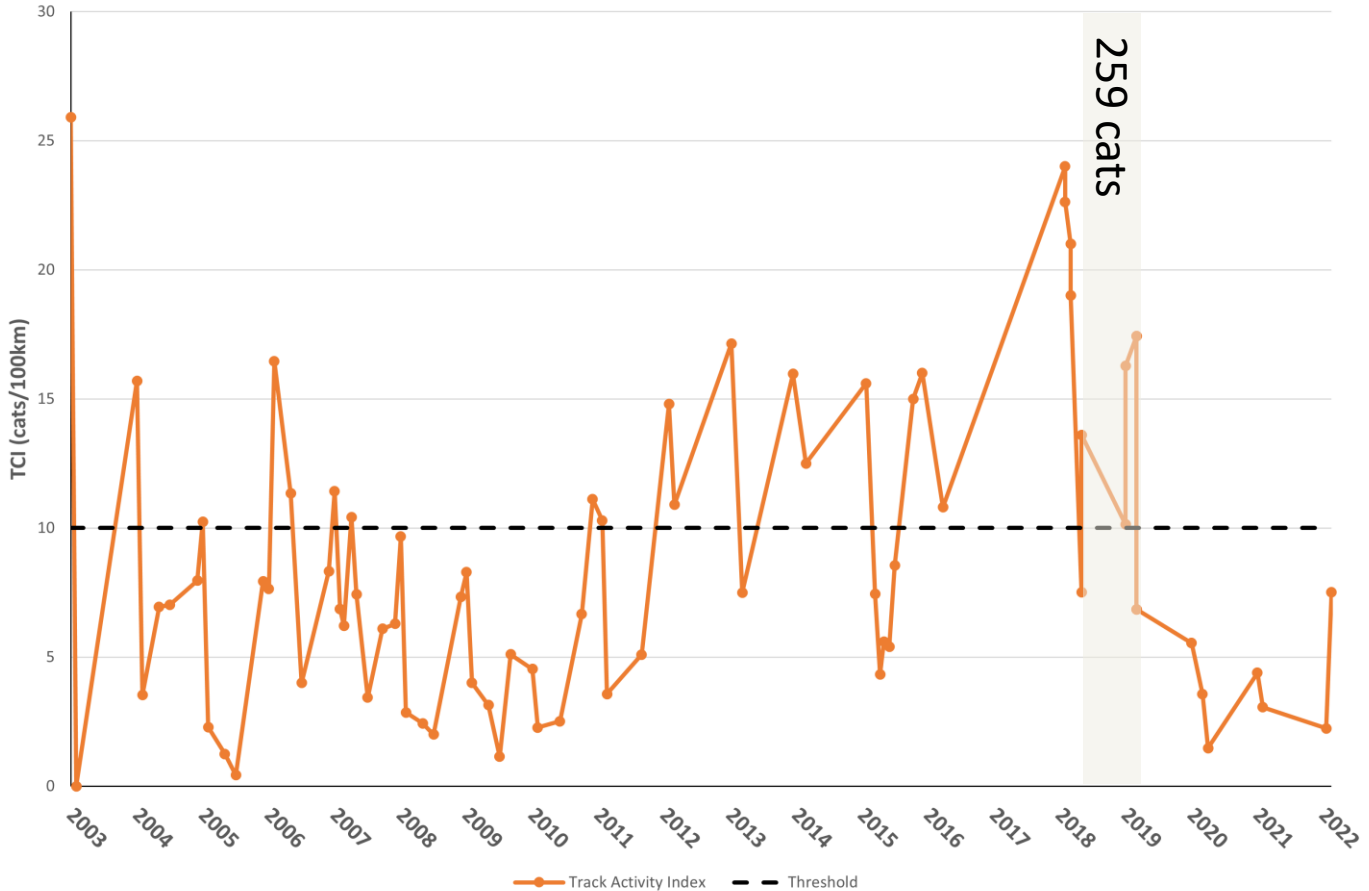
- Western Shield aerial baiting
- Ground baiting
- Unbaited 5km buffer
- Camera-traps
- 2018 Track Activity Index (TAI) transects
- 2019 Track Activity Index (TAI) transects
- 4WD tracks and roads

Habitat categories

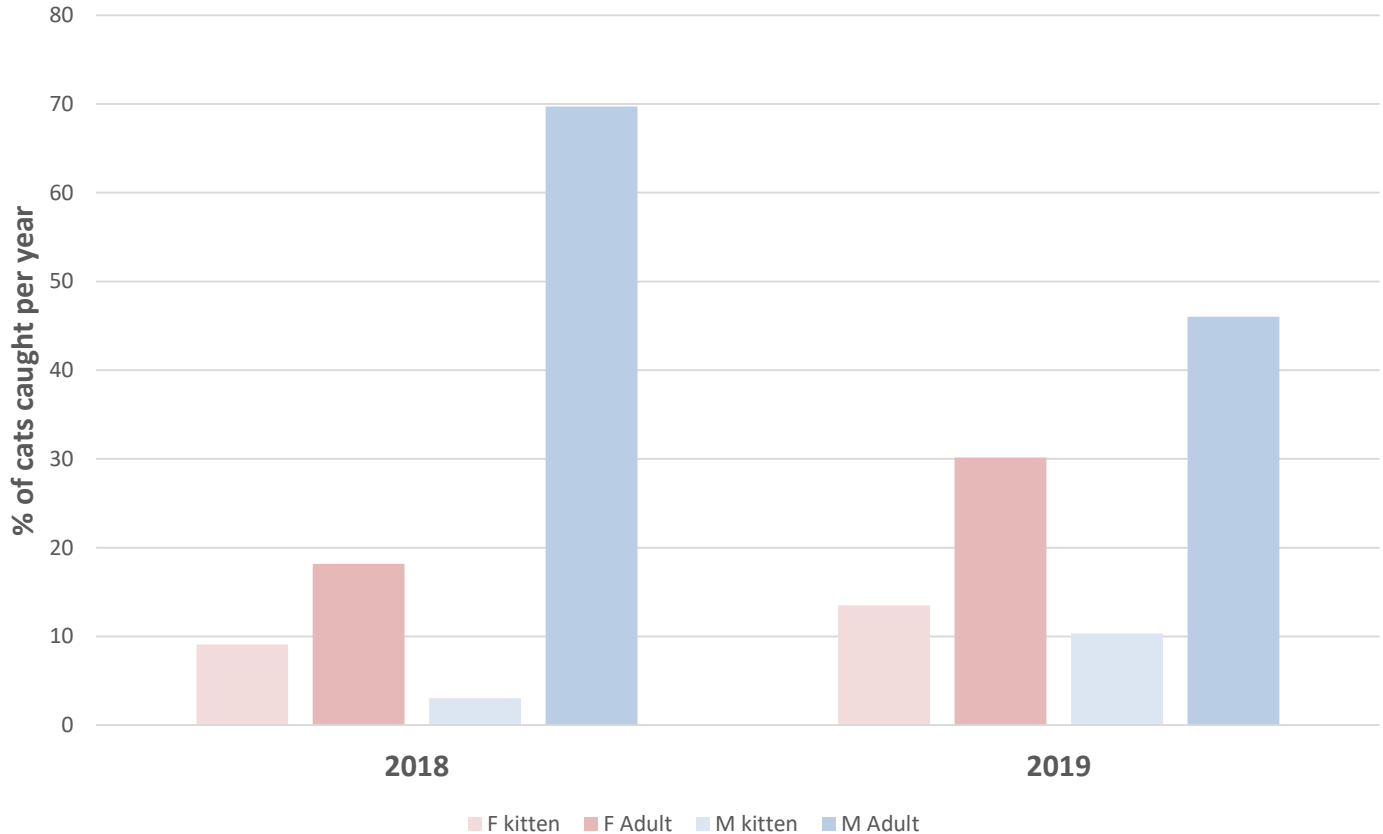
- Sandplain
- Breakaway
- Calcrete
- Hardpan
- Salt lake
- Stony
- Predator-free pen



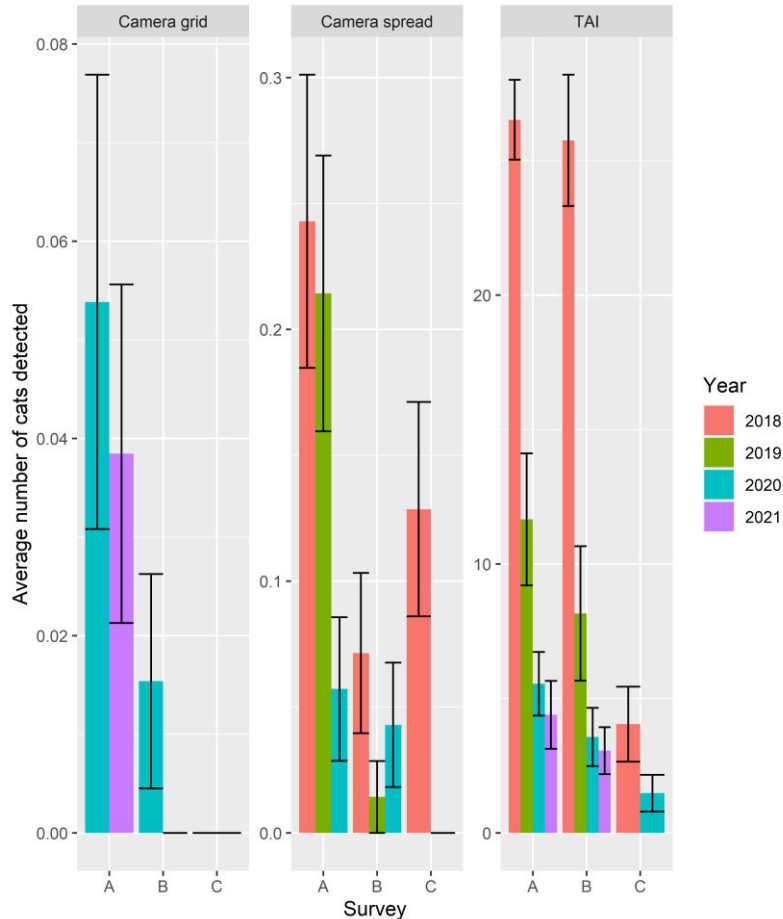
Jump start



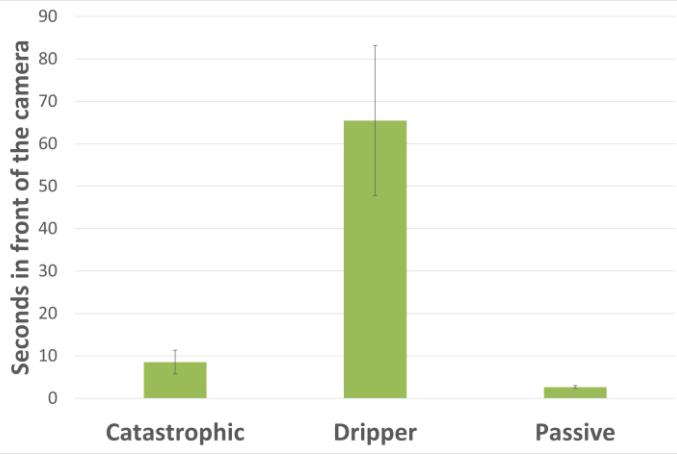
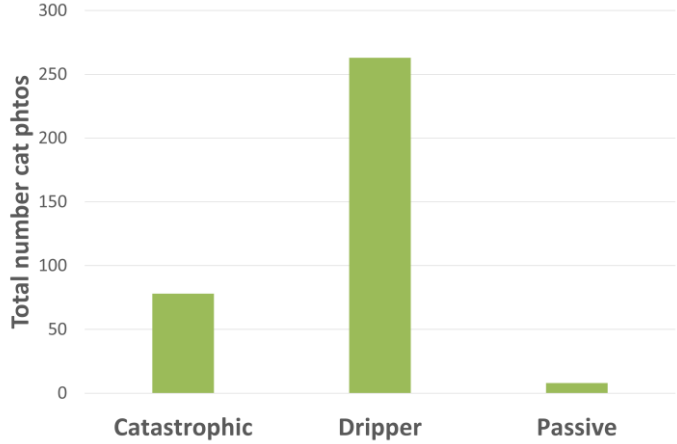
Jump start



But then cats disappeared from the cameras



How do we improve camera detections?



How do we improve camera detections?



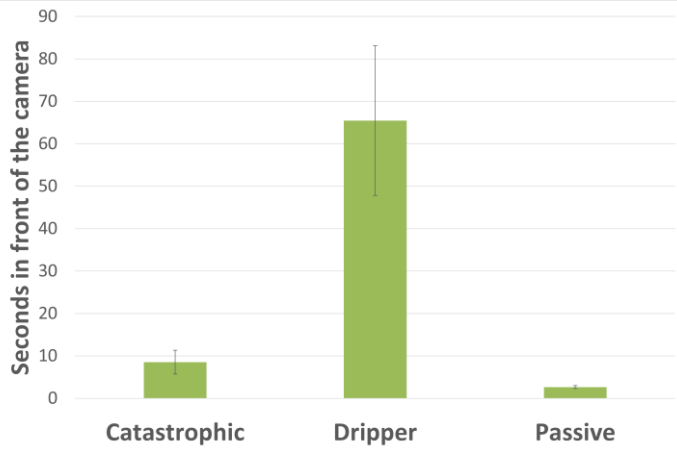
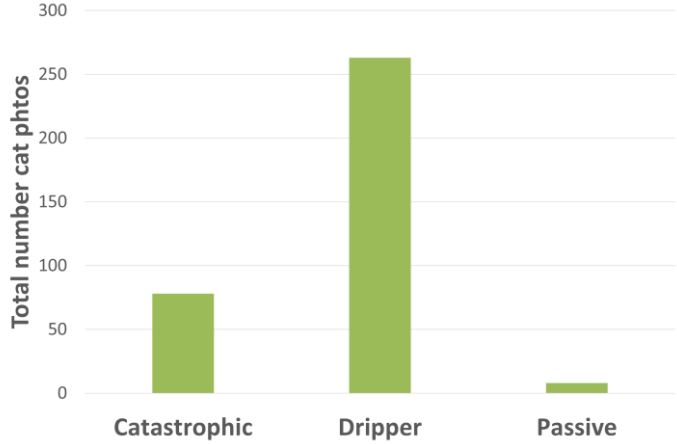
Passive



Dripper



How do we improve camera detections?





Department of Biodiversity,
Conservation and Attractions



Biodiversity and
Conservation Science



**TARLKA
MATUWA
PIARKU**

(ABORIGINAL CORPORATION) RNTBC

*We're working for
Western Australia.*



Thank you