



Testing Felixers on the Birriliburu IPA

Tremaine Anderson and Delston Ashwin

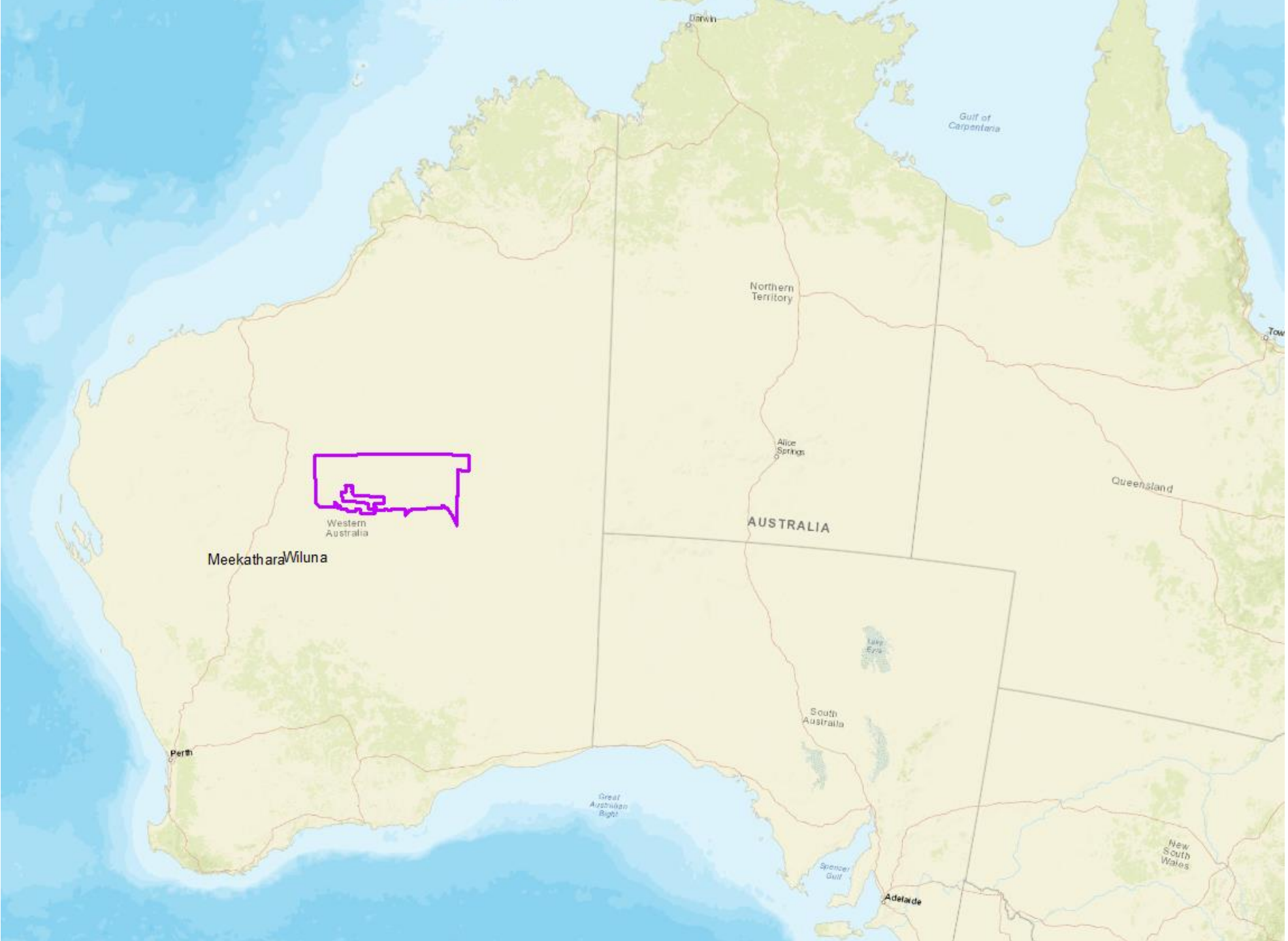


Birriliburu Indigenous
Protected Area

Birriliburu Indigenous Protected Area

- Martu Country
- Became an IPA in 2013
- Big country: 6.6 million hectares
- Little Sandy Desert + Gibson Desert
- Male and female rangers working on country





Darwin

Gulf of Carpentaria

Northern Territory

Alice Springs

Queensland

AUSTRALIA

Western Australia

Meekathara Wiluna

Perth

Lake Eyre

South Australia

Great Australian Bight

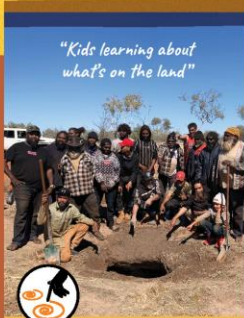
Spencer Gulf

Adelaide

New South Wales

BIRILIBURU

THINGS WE CARE ABOUT



"Kids learning about what's on the land"



TJUKURRKU NINTI – CULTURAL KNOWLEDGE

Keeping our cultural knowledge and stories. Kids coming out with elders and learning about country. Old people telling lots of stories, dancing with kids and making time for cultural activities.

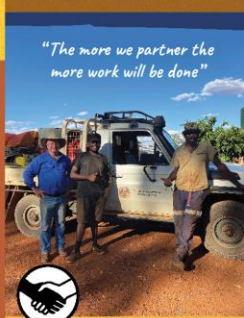


"When you go burning you do it how you been taught, to just burn in patches"



WARU – FIRE

We are continuing what the old people did, good waru on our country, right-way fire. Knowing when a good time is to burn, knowing how to do patchy burns and knowing when to stop burning too. Martu leading the way in their waru.

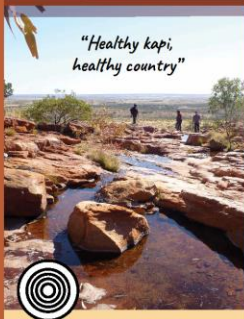


"The more we partner the more work will be done"



TJUNGURRIKU WARRKAMU PALYAKU (WE COME TOGETHER, FOR GOOD WORK) – PARTNERSHIPS

We want to work together and keep strong partnerships with our funders, neighbouring ranger groups, stations, training centres, the Wiluna school, the shire & the police.

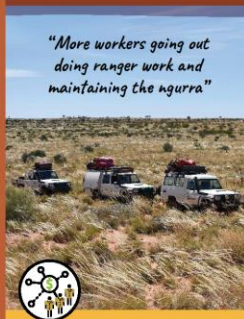


"Healthy kapi, healthy country"



KUNYTJUNYU KAPI – HEALTHY WATER

We want healthy soaks, springs and rockholes that are clear and clean. These are important cultural places for us. We also need good access to water infrastructure on country, like shed tanks and hand pumps.



"More workers going out doing ranger work and maintaining the ngurra"



BUDGETING & ASSETS

We want more work and jobs for Martu and resources to do our ranger work like good cars. Training for rangers including drivers' licences. We want to manage and lead our trips. Creating more business opportunities like with tourism. Our land management company will grow strong.



"We want to see plants, flowers, beautiful bright flowers in the red colourful desert"

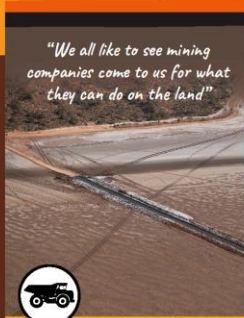


IMPORTANT PLANTS AND ANIMALS

We want to see lots of plants and animals on Country including rare ones like the Tikjara (Great Desert Skink), Mantargaku (Bilby) and Night Parrot plus important kuka (moats) like Parnka (Sand Goanna), Marlu (Red Kangaroo) and Patata (Australian Bustard/Turkey).

BIRILIBURU

THINGS WE WORRY ABOUT

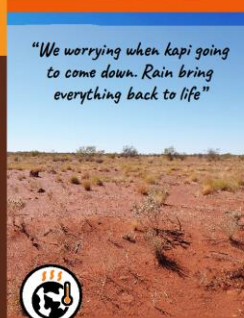


"We all like to see mining companies come to us for what they can do on the land"



NGURRA TJAWALKUNTA (DIGGING UP NGURRA) – MINING

We worry about mining on Birilibiru. We don't always want mining. Have to be careful with mining companies, they are strong.

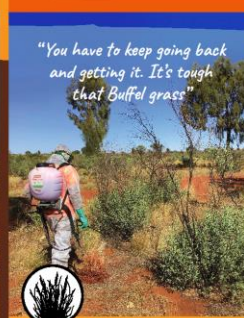


"We worrying when kapi going to come down. Rain bring everything back to life"



KAPI WIYA PUNKARNINPA – NO RAIN

The country has been really dry for some years and we worry about not having rain.

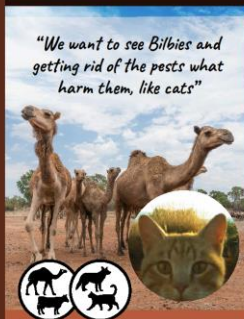


"You have to keep going back and getting it. It's tough that Buffel grass"



WALYKU WIKIRIKATJA (BAD PLANTS) – WEEDS

Buffel grass and other weeds are bad for country. Buffel grows quickly, takes away our bush tucker plants, it's bad for important water sources and causes big fires.



"We want to see Biblies and getting rid of the pests what harm them, like cats"



WALYKULKUNTA-YA NGURRA (THE ONES SPOILING THE NGURRA) – FERAL ANIMALS

Tjufjukulyu (cats) and Tjmirra (foxes) are killing animals that are important to us. Camels (Muritikirri / Kawatjawal) and cattle (Puluku) are getting into our waterholes and damaging our special places.



"Yes it's a big place. You need good cars and to travel a long way"



HARD TO GET OUT ON COUNTRY

Yurru wiyangka yanatjaku-la ngurakuku (we all might not go in any cars to country). We worry about rangers not having drivers' licence and not being able to get out on country. It's a long way and we need good cars and lots of food and water.



"You can look after it by caring & not letting people trespass - have boundaries where they can't go"

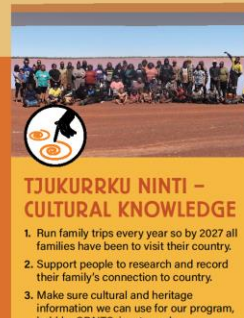


TRESPASSERS

Nganyu-lampattu ngurra, (this right here is homelands for just us). We worry about people going onto Birilibiru without permission. Tourists and scientists going onto our country without Martu.

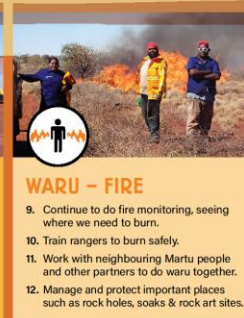
BIRILIBURU

WHAT WE ARE GOING TO DO



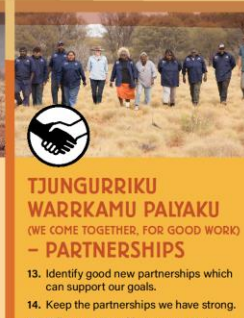
TJUKURRKU NINTI – CULTURAL KNOWLEDGE

1. Run family trips every year so by 2027 all families have been to visit their country.
2. Support people to research and record their family's connection to country.
3. Make sure cultural and heritage information we can use for our program, held by CDNTS, is returned.
4. Repatriate other important Birilibiru cultural and heritage information.
5. Develop a program to ensure that old peoples' knowledge of country is recorded for Martu people to see and use.
6. Use our Martu Ku Information Management System as a place to hold and look at our important information.
7. Work with the Wiluna school to teach kids about Birilibiru country.
8. Work with MNR, CDNTS and other organisations to look at conservation measures to protect key places.



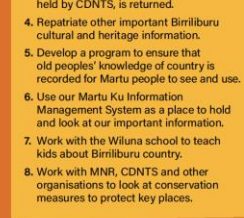
WARU – FIRE

9. Continue to do fire monitoring, seeing where we need to burn.
10. Train rangers to burn safely.
11. Work with neighbouring Martu people and other partners to do waru together.
12. Manage and protect important places such as rock holes, soaks & rock art sites.



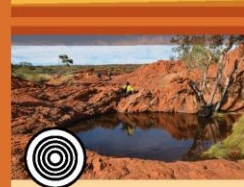
TJUNGURRIKU WARRKAMU PALYAKU (WE COME TOGETHER, FOR GOOD WORK) – PARTNERSHIPS

13. Identify good new partnerships which can support our goals.
14. Keep the partnerships we have strong.
15. Tell our partnership success stories.
16. Develop a better relationship with the Justice system so we can improve outcomes for young people. These include diversionary programs and alternative sentencing programs.
17. Have a good working relationship with stakeholders (like the shire, pastoralists) in Wiluna so they understand and uphold native title rights to country and help promote Martu law and culture.



BUDGETING & ASSETS

22. Train rangers to effectively record cultural and heritage information.
23. Train Martu people to deliver the cultural awareness & tourism program.
24. Train rangers in land management units.
25. Develop strong governance and administration for the land management company.
26. Hand over all grants held by external service providers like Desert Support Services to the Birilibiru land management company.
27. In 2023, begin to employ own staff for the land management company and by 2025 Martu will be trained and supported into many roles.
28. By 2023, develop a program which assists rangers to become coordinators.
29. Install signage and other infrastructure to manage tourists and promote Martu law and culture.
30. By 2027, develop a program in Wiluna to help rangers get and store their ID and other important documents for work.



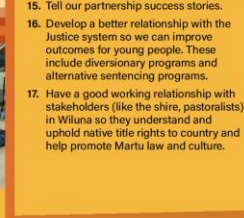
KUNYTJUNYU KAPI – HEALTHY WATER

18. Install important water infrastructure at key places on Birilibiru country.
19. Participate in annual camel shoots on Birilibiru IPA.
20. Make access tracks to important water places where we need them.
21. Manage Buffel grass or other weeds that need management.



BUDGETING & ASSETS

22. Train rangers to effectively record cultural and heritage information.
23. Train Martu people to deliver the cultural awareness & tourism program.
24. Train rangers in land management units.
25. Develop strong governance and administration for the land management company.
26. Hand over all grants held by external service providers like Desert Support Services to the Birilibiru land management company.
27. In 2023, begin to employ own staff for the land management company and by 2025 Martu will be trained and supported into many roles.
28. By 2023, develop a program which assists rangers to become coordinators.
29. Install signage and other infrastructure to manage tourists and promote Martu law and culture.
30. By 2027, develop a program in Wiluna to help rangers get and store their ID and other important documents for work.



IMPORTANT PLANTS AND ANIMALS

31. Continue to use the 'Felixer' machine to kill cats and foxes.
32. Monitor some populations of Biblies and Great Desert Skink.
33. Look out for plants and animals that are threatened, such as night parrot, and protect them where we can.

Threatened Species on Birriliburu



Mantangalku (Bilby)



Kakarrarturl (Marsupial mole)



Tjakura (Great desert skink)



Tjakkati (Brush-tailed mulgara)

Walykulkunta-ya ngurra

One of the things we worry about on Birriliburu is feral animals

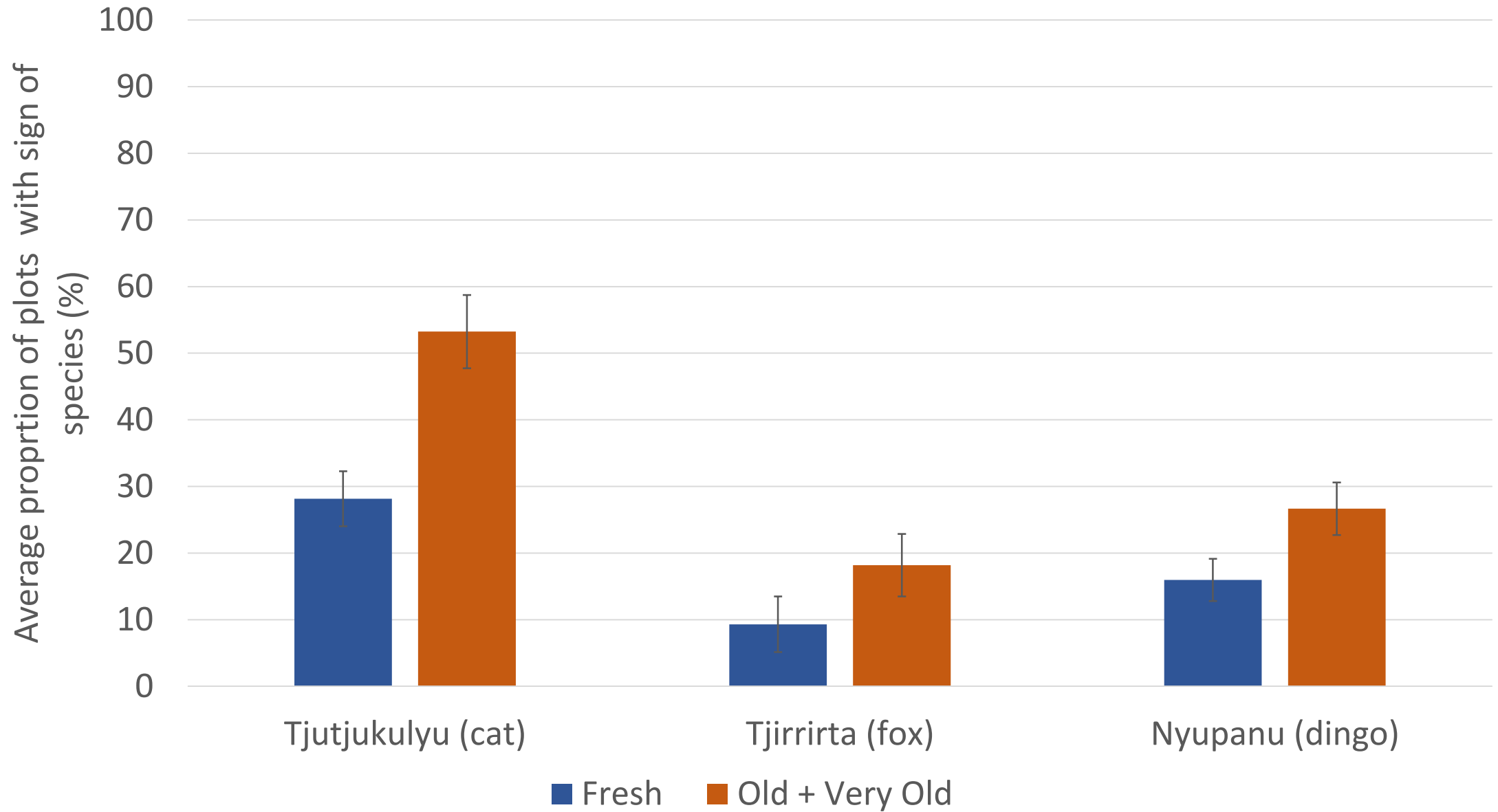
Tjutjukulyu (cats) and tjirrita (foxes) are killing animals that are important to us like mantangalku (bilby) and tjakura (great desert skink)



Monitoring Feral Predators

- Track Plots
 - 14 permanent track plot sites at Katjarra
 - 145 Track plots surveyed at Katjarra since 2015
- Cameras
 - Motion cameras placed on roads around Katjarra
- Predator scats
 - Scats collected to analyse what they are eating





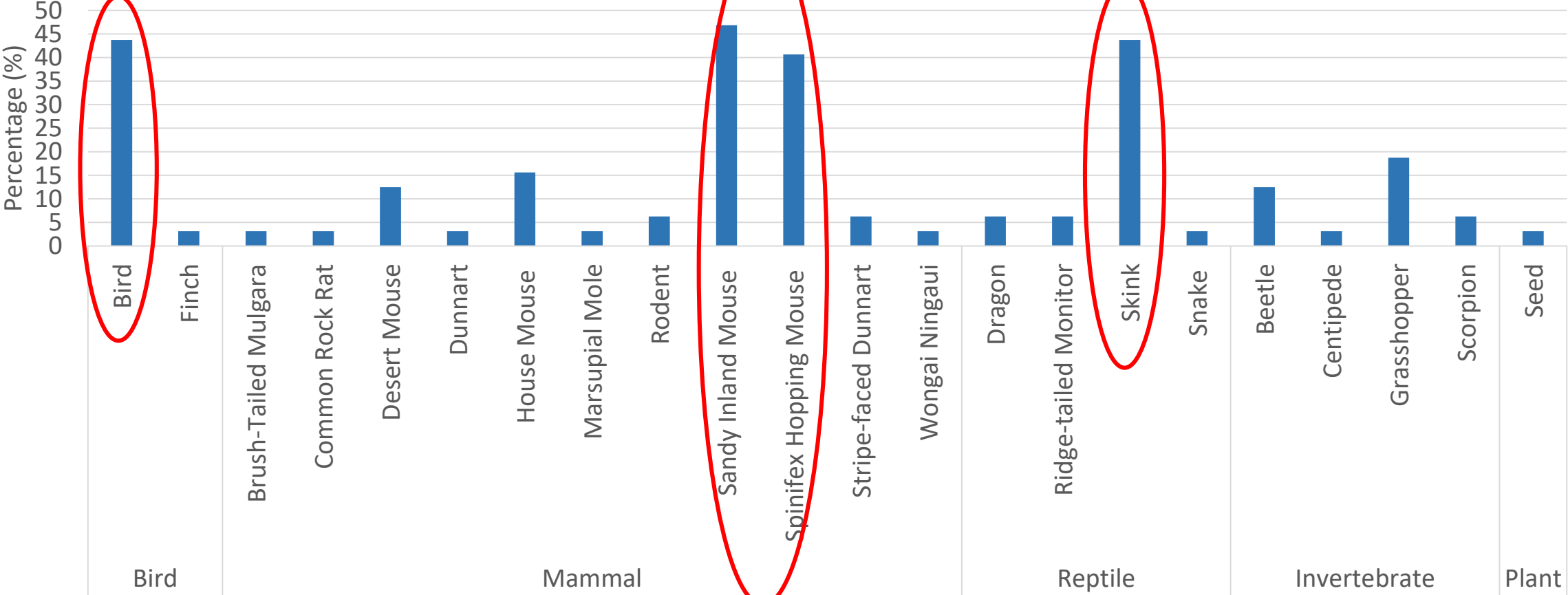
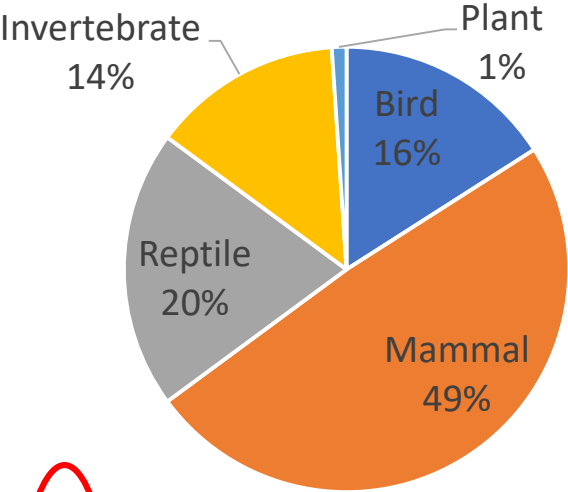
Predator scats

Total of 117 scats from cats, foxes and dingoes have been collected and analysed across the Birriliburu IPA



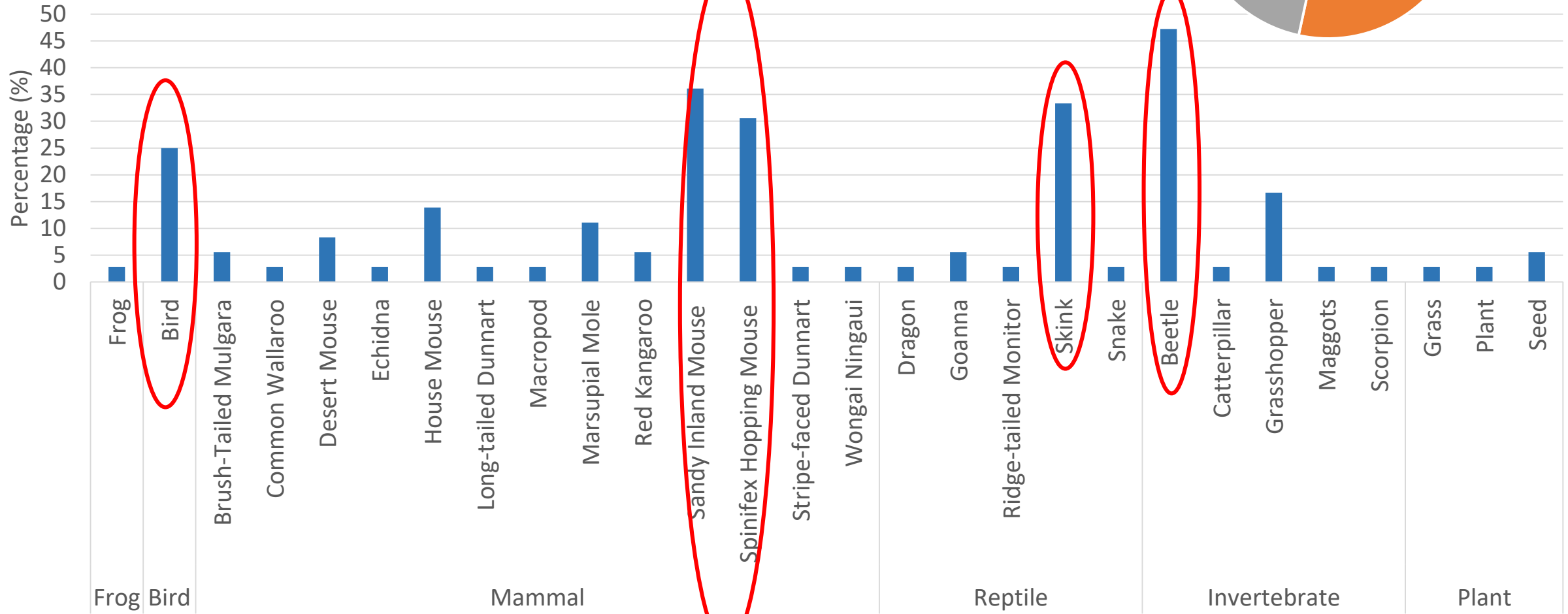
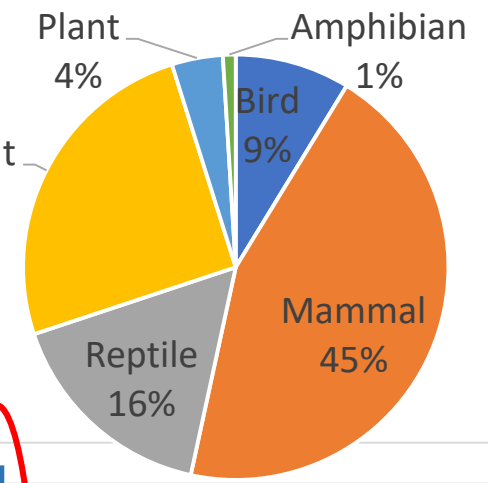
Cat Diet

**Cats eating
Mice, Skinks and
Birds**



Fox Diet

Fox eating Birds, Mice, Skinks and Beetles



Why use Felixers?

- Birriliburu is very remote and Felixers don't require much maintenance compared to other methods
- Shooting or trapping are too time intensive and not feasible. And reluctant to use widescale baiting because it will impact the dingoes.
- Want to put them in key areas to protect threatened species





Where did we put the Felixers?

- Katjarra (Carnarvon Ranges) in the south west corner of the IPA
- Used our track plot data and camera traps to find areas of high cat activity
- Looked for cat tracks on the road when driving





2021

Set up the machines in July but the solar panel didn't work so the machines ran out of battery



2022

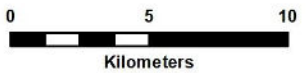
Set up machines in April, checked them again in July and brought them back to Wiluna in September

Felixer Locations 2022



Legend

- Felixers_April2022
- Track Plots
- Roads
- Birriliburu_IPA



Coordinate System: GDA 1994 MGA Zone 51
Scale 1:247,306 @ A4
Created by Stella Shipway
Date: 18/06/2022





How did they go?

- 3 Felixers out from April – September (5 months)
- 12 photos of cats, 5 were targets (41.6% success)
- 8 photos of foxes, 4 were targets (50% success)
- Felixer 1 - no targets
- Felixer 2 - 4 fox targets
- Felixer 3 - 5 cat targets



← **TARGET**



← **Not a target**



← **TARGET**



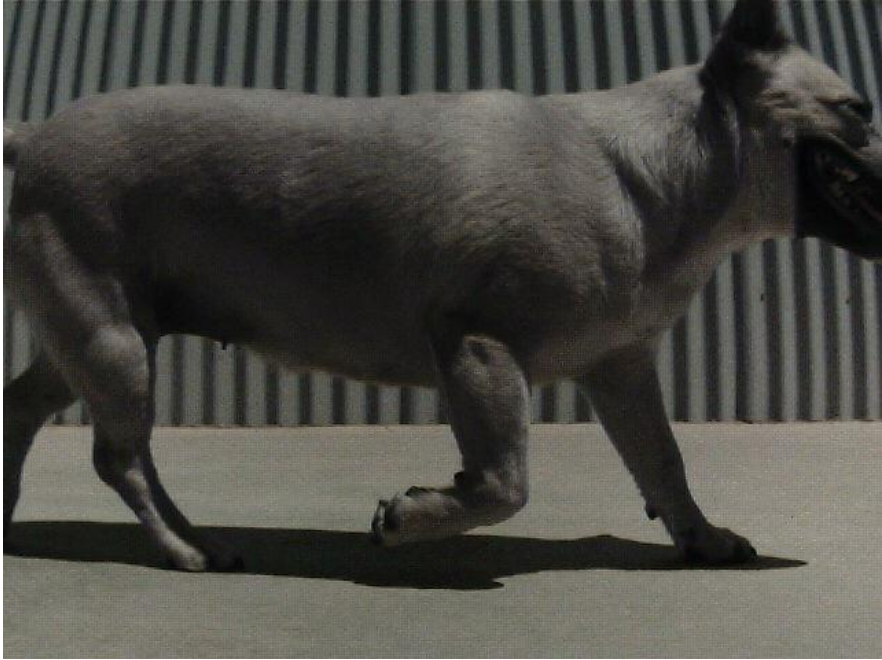
← **Not a target**



NOT TARGETS



When we were testing the machines in Wiluna last year (with no poison)....



← **TARGET**

Have to be careful around town because little tjarntu will be a target,
luckily Birriliburu is very far away from town

What have we learnt?

- Set them up in a good spot where lots of cats walk past
- Take your time when setting them up
- Takes a long time to get approvals and permits to use them, be patient
- Will only work in a small area
- Good for remote areas but you still need to check them regularly



What next?

- Hoping to have them out with 1080 by mid year
- Still working on the permits and approvals to use them with 1080
- Get more rangers trained in online Felixer training and 1080 use
- Decide where we put them

Thank you for listening

